

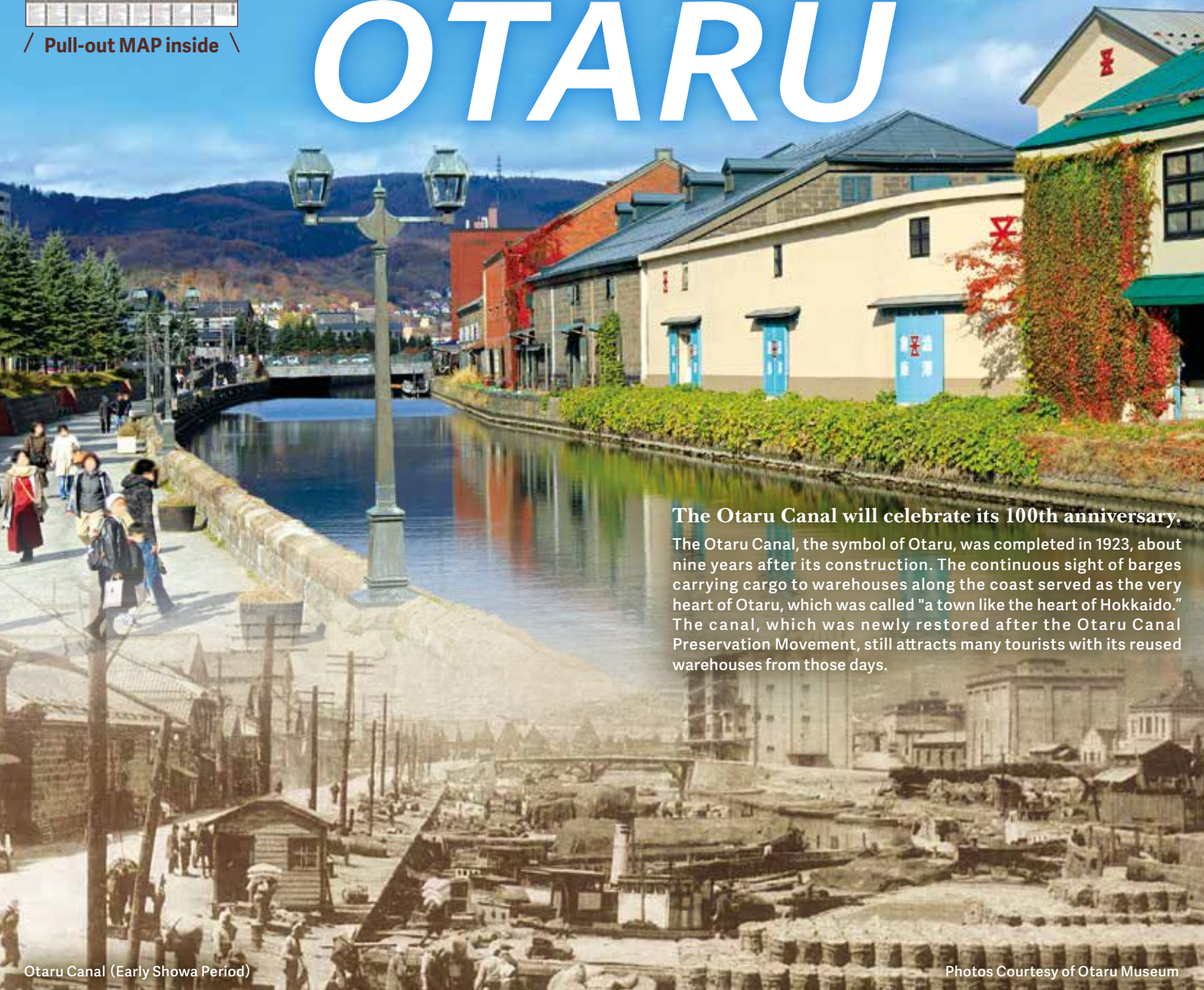
【Official】
Otaru
Tourist Guide Map 2023
TAKE FREE
Please Take One



/ Pull-out MAP inside \



Welcome to OTARU



The Otaru Canal will celebrate its 100th anniversary.

The Otaru Canal, the symbol of Otaru, was completed in 1923, about nine years after its construction. The continuous sight of barges carrying cargo to warehouses along the coast served as the very heart of Otaru, which was called "a town like the heart of Hokkaido." The canal, which was newly restored after the Otaru Canal Preservation Movement, still attracts many tourists with its reused warehouses from those days.

Otaru Canal (Early Showa Period)

Photos Courtesy of Otaru Museum



*Each facility is taking measures to prevent the spread of the novel coronavirus so that guests can feel safe and comfortable when visiting. *Information is current as of March 2023
【Published By】Otaru Tourism Association

A lot of
information
that cannot
be introduced
on paper

For more fun Otaru sightseeing information, visit
the Otaru Tourism Association official website.



Otaru
Tourism Association

search



For in-depth
local
information

Monthly hot topics are now available
in our web magazine!



Monthly Otaru Jishin

search



浪漫

に魅

Be Enchanted by The Romantic Charm

Tour the Historic and Romantic City

When you leave the station, you will be greeted by buildings that have been standing there for a long, long time. How about enjoying an exceptional trip back in time as you walk the city that brings out a sense of nostalgia?



Let us show you the hidden charm of Otaru while feeling the breeze on a rickshaw!

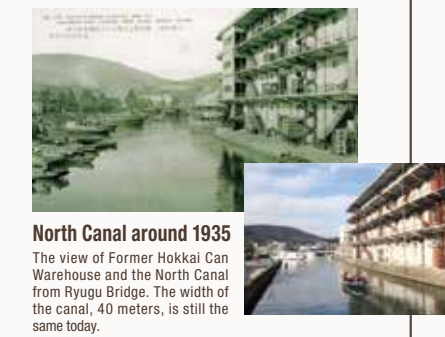
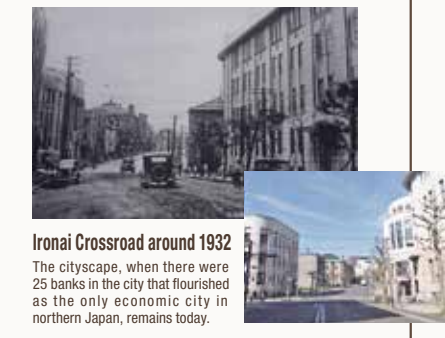
Your Otaru Journey Begins Now!



Feel History
Canal ~ North Canal Area

Otaru Used to Look Like This!
Time Travel
by Looking for The Landscape
That Remains To This Day!

The Otaru Canal
will celebrate its 100th anniversary.



Photos Courtesy of Otaru Museum

North Canal
Place where the good old days of Otaru,
when it prospered as the main gateway to
Hokkaido, remain.

Relax and Enjoy the Nostalgic City

The old-fashioned town scenery wherever you look is picture perfect.
Enjoy the serenity and let time pass by slowly.

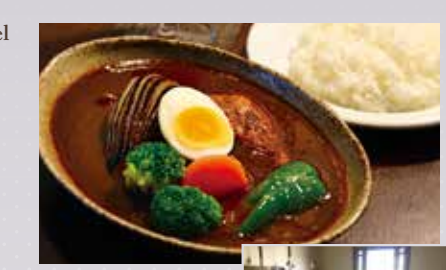
Indulge Inside a Stone Warehouse



3 Restaurant
MANGIARE TAKINAMI



1 Cafe Bar & Hostel
STONE and
IRON
A unique stone warehouse
more than 100 years old,
this dining café offers a
taste of Otaru's history.



2 PRESS CAFÉ
A sophisticated hidden place
along the North Canal. A
tranquil and relaxing place to
spend time during your trip...



A warehouse related to
Eiichi Shibusawa, who
will be featured on the
new ¥10,000 bill.



Experience History



4 JR OTARU STATION
(Nationally Registered Tangible Cultural Property)
Be welcomed by 333 lamps and a retro station.
Take in the ocean view from the train's window
that hasn't changed over time during the ride
between Sapporo and Otaru.



Steam locomotive
"Iron Horse" that runs
on the premises!

6 Otaru Museum
(Main Bldg.)
A museum where you can get
excited about history, trains,
and science.



5 OTARU ART BASE
Various works of art are displayed in historic
buildings. A space where history and art mingle
together.



7 Former Temiya Railway
The first railway in Hokkaido. Now
abandoned, the remains that supported
Otaru's prosperity is now a footpath.

for more information

Otaru Portal Enchanting Romance search

街歩

心に躍らせて

Walking the Exciting Streets

New Encounters Walking Through the Streets

Colorful accessories, simple desserts, and retro shopping streets... One of the good things about Otaru is there's lots to see within walking distance. It's exciting, like treasures in a city with history.



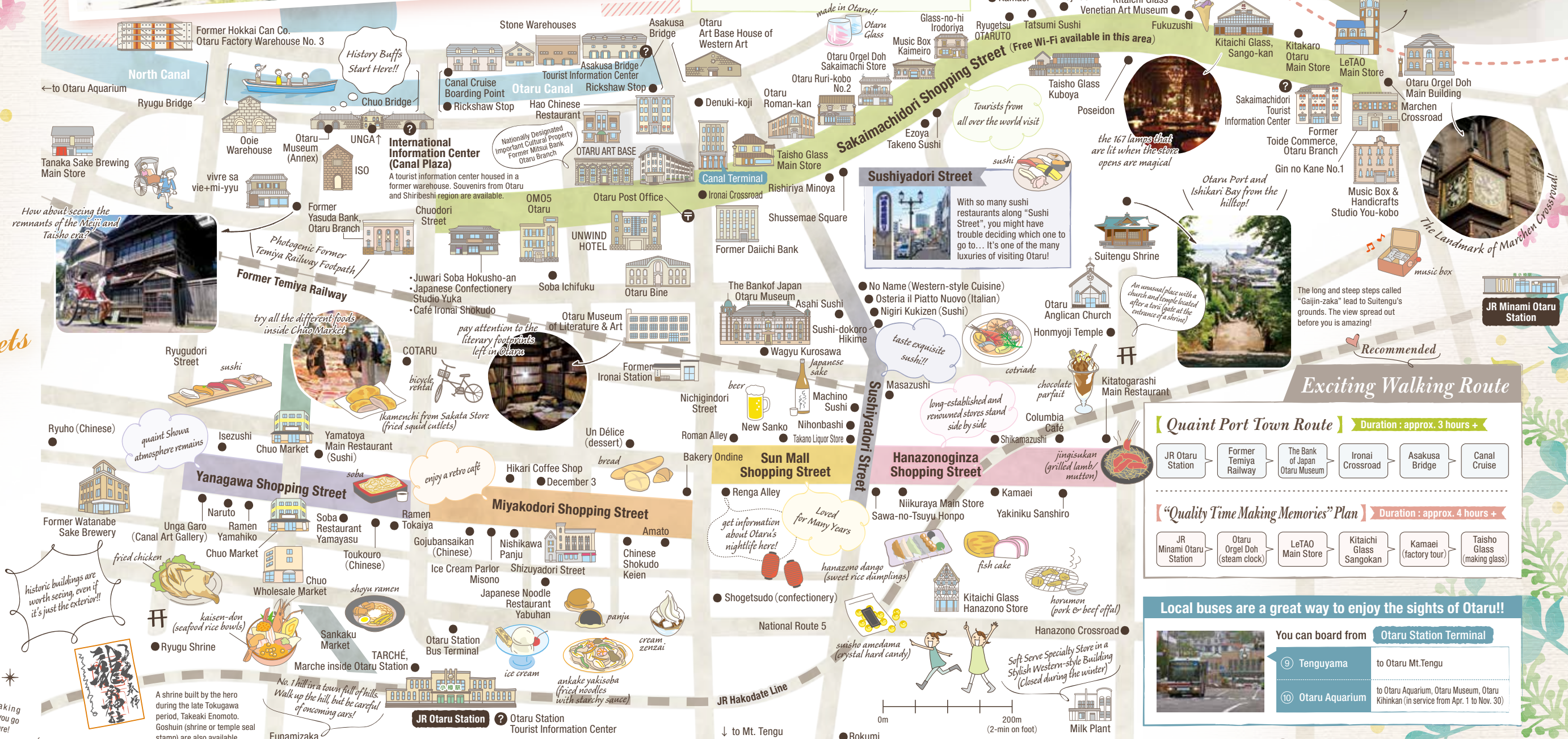
Rishiriya Minoya
Ms. Mihara



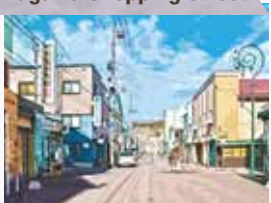
Former Temiya Railway

"The Former Temiya Railway" is the abandoned railway of the first railway in Hokkaido. Perfect for taking a walk as there's a path alongside it. You can actually walk on the rails, so give it a try!

Slow Down,
Take Your Time,
and Enjoy ♪



Yanagawa Shopping Street



A Shopping Street Where Nostalgia and Quaint Atmosphere Remains
A shopping street where the essence of the Showa period remains through the decorative street lamps. The "Chuo Market" built intersecting the street is unique.

Miyakodori Shopping Street



The Arcade and Banner of Takeaki Enomoto are Landmarks
A 3-minute walk straight down from Otaru Station to the port. There are lots of retro cafes with an old town atmosphere.

Sun Mall Shopping Street



Very Conveniently Located in the Center of the City
2 locations with various food stalls, a restaurant with an extensive menu, and a liquor store. A street for those who like to drink.

Hanazonoginza Shopping Street



Also Known As "Hana-gin" Where JR Trains Run Above Your Head
The Hanazono area, which is Otaru's drinking district, has a different feel at night compared to the day and is quite alluring. There's lots of excitement!

Quaint Port Town Route

Duration: approx. 3 hours +
JR Otaru Station, Former Temiya Railway, The Bank of Japan Otaru Museum, Ironai Crossroad, Asakusa Bridge, Canal Cruise

"Quality Time Making Memories" Plan

Duration: approx. 4 hours +
JR Minami Otaru Station, Otaru Orgel Doh (steam clock), LeTAO Main Store, Kitaichi Glass Sangokan, Kamaei (factory tour), Taisho Glass (making glass)

Local buses are a great way to enjoy the sights of Otaru!!

You can board from Otaru Station Terminal	
9 Tenguyama	to Otaru Mt.Tengu
10 Otaru Aquarium	to Otaru Aquarium, Otaru Museum, Otaru Kihinkan (in service from Apr. 1 to Nov. 30)



Buildings with this sign are designated as historic buildings by the City of Otaru.

for more information

Otaru Portal Exciting Streets

search



夜

遊を び 尽く して

NEW Night Information Spot

Don't hesitate to ask the staff at Renga Alley and Roman Alley about Otaru's nightlife.
If you ask when it's not busy, they'll be more than happy to help.

What's there to do at night?



Pictured : Cafe Dining Renga W

Otaru Stall Village Renga Alley

A casual, reasonably priced food stall village where you can hop from one to another. Go alone or in a group!

Otaru Free Range Chicken



Jingisukan (grilled lamb/mutton)



Oden (fishcake stew)



Around 17:00~21:00

Delicious Dinner

A good atmosphere that's typical of Otaru.
We hope you enjoy the night at any one of these restaurants!



3 Otaru Stall Village Roman Alley

While enjoying any one of the food stalls, you can't help but wonder about the one next door! There are lots of fun stalls.



Japanese Dashi Itoen

4 SUSHI & GRILL IL ONAI

Enjoy Spanish bar-style "sushi and grill" using Hokkaido ingredients. Lunch, a la carte, and course dinners are available.



5 Yakiniku Sanshiro

If you're looking for yakiniku in Otaru, this is the place! Their horumon (pork & beef offal) is divine.

A variety of wine and Japanese sake



Around 18:00~23:00

Drink to Your Hearts Content

Relax and enjoy... you end up drinking more when the atmosphere's good

6 Sake Restaurant Fujirin

Enjoy the bar owner's Japanese hospitality and delicious oden while having a drink.

Welcome! Come on in!



Toast with our local cocktail "Otaru Nama Wine Ball!"



The local craft beer is really delicious!

7 Otaru Beer

Prost (cheers) to the atmosphere of a real German pub!



8 BAR MODERN TIMES

A great bar that's stylish, chic and cozy.

for more information

Otaru Portal Staying Out All Night search



Around 17:00~23:00

Enjoy music!

Jazz? Rock? Enjoy a night with music!



A Sophisticated Concert Venue

1 Otaru GOLDSTONE

A warehouse built around 1892 that turns into a mellow concert venue. An array of food and drinks are available.

2 JAZZ Café Free-Lance
An acoustic space using a stone warehouse built during the Meiji era. Enjoy a moment of happiness with your favorite record and triple brewed coffee.



Tourist Information Center

Hotel

Illumination Times for Facilities:
sunset - 22:30 (gas lamps: until 24:00)

Tour the port on a yakatabune boat this summer!



Around 20:00~24:00

Showa Retro Restaurant Area [Hanazono Area]

An area in Otaru where there are lots of restaurants, bars, and hostess bars! Be sure to explore the Showa Retro drinking district where locals frequent.



Snack Kaen (hostess bar)



Grab our popular Otaru Night Map!

Last Departing Train from JR Otaru Station (as of Mar. 2023)

◆ to Sapporo 23:09
◆ to Yoichi・Niseko 22:30

Must See

Classic Night Spots



A Walk Along the Canal at Night (Illuminated Canal)

The warehouses and light reflect in the water when the gas lamps are lit, creating a magical atmosphere. We especially recommend seeing it at dusk when the sky is still slightly blue!
※ Gas Lamps along Otaru Canal: sunset~24:00 / Warehouse Illumination Times: sunset~22:30



Canal Night Cruises (approx. 40 min)

Cruise along a canal illuminated by the warm glow of gas lights. Enjoying views of the canal's more romantic side could make for great memories.
※ Departs after sunset / Adults 2,000 yen, Elementary School Students 500 yen, Infants free (1 infant per 1 paying adult)



Rickshaw Ride at Night

A guided rickshaw ride that takes you past the best spots. The time ride is great, but the ride through the illuminated city at night is even more amazing.
※ One Section (12~13 min): 4,000 yen~ for 1 passenger



Guided Walking Tour

Guided walking tour of illuminated historic buildings in the summer evenings. Feel free to join.
※ From 19:00 every Tuesday, Thursday, Saturday during July and Aug. / Meet at Former Ironai Station along Former Temiya Railway / No reservations necessary, free / only available in Japanese



Night View from Mt. Tengu (Tenguyama Ropeway)

The city lights spread out below is considered "One of the Three Best Night Views of Hokkaido". Even the ride up the ropeway is exciting!
※ Please check the website for rates.

※ Please note business hours, schedules, and fares are subject to change. Please contact the facility in advance for details.

Authent Hotel Otaru
Ms. Sawano

自然に感動して

Be Moved by Nature

Be Empowered by Nature

Otaru is surrounded by both the sea and mountains, making it easy to access both. A nearby nature-land that's 30 min. away from the city's center. You can enjoy yourself wherever you go, so get away from your everyday life and recharge.



Canal Cruise
Ms. Miyake



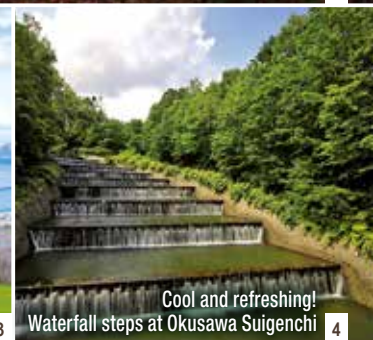
Who will you share this view with? Sunset from Shukutsu Panorama Observatory 1



Try Sea Kayaking on the Open Waters of Shioya! 2



Beautifully contrasting sea and cherry blossoms at Temiya Park 3



Cool and refreshing! Waterfall steps at Okusawa Suigenchi 4



Enjoy the quiet sea by SUP! 5



Conquer the spectacular sky view by climbing Shioya Maruyama! 6



Breathtaking fall foliage and retro playground equipment 7



Ski slopes with panoramic views of Ishikari Bay are the best! 8



Saddle up for a ride through mountain trails in the fall, now this is Hokkaido! 9



The sunrise and sea of clouds from Kenashiyama Observatory. Get up early and be impressed by a once in a lifetime experience! 10



How about enjoying the snowy scenery while relaxing in a hot spring at Asarigawa Onsen? 11



The 360° view from the bridge is breathtaking! 12



Be exhilarated gliding down the slopes. Woo-hoo! 14

1 Shukutsu Panorama Observatory

[Approx. 25 min by car or bus from Otaru Station]

The Sea of Japan spread out before your eyes is the definition of panorama. You can also see Cape Takashima and Hiyoriyama Lighthouse, as well as encounter a special scene at sunset.

2 BLUE HOLIC Sea Kayak

[BLUE HOLIC Sea Kayak St. (Reservations Required)]

Take a sea kayak and have a great adventure on the shining blue water! The guide will give you detailed explanations, so even beginners can have fun.

3 Temiya Park

[Approx. 10 minutes by car or bus from Otaru Station + approx. 10 min walk uphill]

Many people visit the park during cherry blossom season when the view overlooking Otaru Port and the blooming cherry blossoms are spectacular.

4 Okusawa-Suigenchi

[Approx. 20 min by car or bus from Otaru Station]

A stepped spillway is used to release water from a dam or river. Currently, it is no longer in use but is open to the public for a limited time during the year.

5 SUP

[For details, please refer to the lower right QR code]

SUP is where you stand on a surfboard and paddle yourself around. Try Stand Up Paddle boarding in a quiet coast with hardly any waves!

6 Shioya Maruyama

[Approx. 5 min by car from Shioya IC 20-minute walk from Shioya Station to the trailhead]

Take in the view of the Sea of Japan's coastline from the mountaintop! Recommended for beginning climbers.

7 Nakano Botanical Garden

[Approx. 20 min by car or bus from Otaru Station]

A botanical garden with a history over 100 years. A unique space with stunning autumn foliage and old school playground equipment, as if you've traveled back in time.

8 ONZE

[Approx. 30 min by car or bus from Otaru Station]

With easy access from Sapporo, enjoy a variety of trails for beginners, intermediates and advanced skiers. Night skiing open until 11pm.

9 Haruka Horse Ranch

[Approx. 35 min by car from Otaru Station]

Take in the magnificent view of Ishikari bay on horseback. Forest trails include rides for beginners, with creek crossings for the more experienced, as well as for families.

10 Kenashiyama Observatory

[Approx. 25 min by car from Otaru Station]

A popular observatory to take in the night view along National Route 393. You can see the nearby mountains and cities, as well as the Mashike Mountains on a clear day.

11 Asari Classe Hotel

[Approx. 30 min by car or bus from Otaru Station]

A resort hotel with hot springs in the woods surrounded by the great outdoors. Relax your mind and body at Asarigawa Onsen Hot Springs tucked away from the city center.

12 Asari Sky Loop

[Approx. 35 min by car or bus from Otaru Station]

A spiral bridge at Asari Dam. A great destination to connect with nature through the four seasons.

13 Tenguyama Ropeway

[Approx. 18 min by car or bus from Otaru Station]

The view from the mountaintop by ropeway is amazing. In addition to the observatory, there are many facilities, such as a restaurant and chipmunk park. The night view is also stunning.

14 Tenguyama Ski Resort

[Approx. 18 min by car or bus from Otaru Station]

Slopes with excellent access from the city and great views of the city spread out before your eyes. There's an area for beginners as well as a sledding area!





Uni (sea urchin), crab, and ikura (cod roe) are caught in Otaru!!!

▶ Kaisen-don

(seafood rice bowl)
Otaru is a city famous for sushi. So if you want to devour fresh seafood, feast your eyes and satisfy your hunger with a seafood rice bowl!

▶ Ankake Yakisoba

(fried noodles with thick starchy sauce)
In Otaru, yakisoba (fried noodles) are made ankake-style (with a thick starchy sauce)! You can find it at over 100 restaurants in the city, each place having their own flavor.

4th place at the
"2019 B-1 Grand Prix"
(Regional Fast Food Cheap Eats)



The nostalgic
sauce flavored noodles
at "Dondo Yakisoba"!

You're on vacation so go ahead
and splurge on an ankake-don
(sea urchin rice bowl)!!



Start Your Otaru Trip
with Sushi

▶ Sushi

Otaru is known as "sushi city".
Sushi made using fresh seafood
and shellfish caught from the
foreshore is what we can proudly
call "the taste of Otaru".



Herring Sushi. You'll be addicted.

▶ Fried Chicken

Otaru's famous fried chicken!
Crispy skin and juicy meat. A large
portion but you end up cleaning
your plate and enjoying every single
bite!



A must-have
for Christmas in Otaru!
Take Out OK

▶ Soba

(buckwheat noodles)

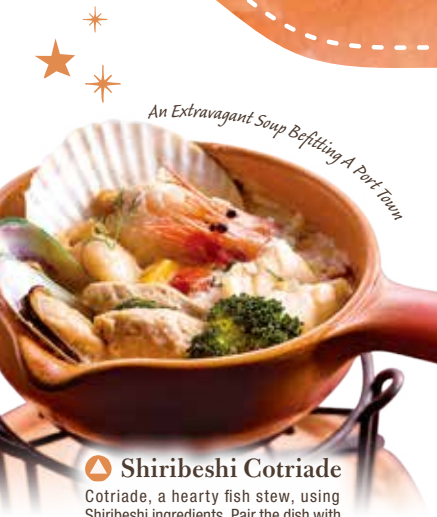
Many restaurants opened all at once
during the Meiji era, thanks to the
large number of laborers. Soba
restaurants also flourished during that
time and many still remain to this day.



Otaru mantis
shrimp, in season in
the spring and fall,
are said to be the best
in Japan for their
large size and
exceptional taste!

▶ Pasta

As Otaru flourished as an international
trading port from an early time,
Western-style cuisine also evolved.
Locals love the regional dishes as well
as the classics.



An Extravagant Soup Befitting A Port Town

▶ Shiribeshi Cotriade

Cotriade, a hearty fish stew, using
Shiribeshi ingredients. Pair the dish with
a local wine.

Must Eat

Otaru Local Eats

for more
information



Sweet Treats

Delicious Sweets

for more
information



Crispy on the Outside,
Moist on the Inside

▶ Panju

Pan (bread) + Manju (Japanese
steamed cake with filling) = Panju!
Enjoy the Otaru specialty born
during westernization, especially
when freshly made!

A must when strawberries
are in season!



▶ Strawberry Cream Zenzai

(sweet azuki red beans, mochi rice cake, and ice cream)
Signature dessert of Otaru's long-established
confectionery store. The classic "cream zenzai" has
remained popular for more than half a century.

A Taste Loved by Locals for Years



▶ Mochi

(Japanese rice cake)
There are many long-established
mochi stores in Otaru. The taste
that hasn't changed over time
will bring back memories.

▶ Dango

(sweet rice dumpling)



Try all the flavors!



"Mont Blanc" cake,
but it's not made
using chestnuts

▶ Mont Blanc

This is Otaru's "Mont Blanc" cake.
It is a chocolate cake resembling a
"white mountain" (the English
translation of the French word
"mont blanc")



approx.
30 cm



chocolate parfait,
delicious any time of the day

▶ Parfait

A classic old-fashioned parfait
like this is exactly what comes to
mind. Savor the taste that never
changes at a local café.



▶ Soft Serve Ice Cream

Unbelievably big NY Jumbo ice
cream cone. A rainbow tower that
stands out. Who can resist ice
cream when they're on vacation?

Otaru Bijin Series

Developed
around the concept,
"to realize women's
happiness"

Otaru Niikuraya

Hanagoromo

Strawberry cream filling using
Shiribeshi strawberries,
wrapped in a soft sponge cake.



Otaru Shogetsudo

Shio Dorayaki

A slightly salty dorayaki filled
with azuki bean paste and cream
made from Iwanai deep water
sea salt and fermented butter.



Otaru Shogetsudo

Nama Dorayaki

Fluffy pancake sandwich with
red bean paste and raspberry
cream using Shiribeshi
raspberries.



Osteria il Piatto Nuovo

Catalana

An ice cream or custard-like
dolce, or dessert, with jam made
from Niki prunes sandwiched in
between. ※ Only available at
the restaurant listed above.



Rokumi

Japanese Crepe

Filling made from Yoichi
apples wrapped inside mochi
rice cake.



Tanaka Sake Brewing

Umeshu (plum wine) • Junmai Daiginjo

Umeshu (plum wine) is made
from 100% Shiribeshi fruit, as
well as skin benefits!



Processed Seafood

Otaru has a long history in the
processed seafood industry. New
flavors are created continuously
using local ingredients, original
techniques, and ingenuity. That is
the "Otaru Brand".



Kamaei Fish Cake

Exquisite fish cake using fresh
ingredients handmade by
culinary craftsmen. They have
a variety of fish cakes so it's
really hard to choose!



Canal Plaza Nishin Otaruzuke (Pickled Herring)

Seven processed seafood
companies in the city pour their
passion into transforming Otaru's
famous "herring" into something
new and more delicious.



TARCHE, Marche inside Otaru Station Otataru no Konabe (Mini Hot Pot)

The broth and ingredients are packed
with the umami of fish sauce. Enjoy
an authentic seafood hot pot just by
heating it in the microwave!
(Manufacturer: Otaru Kaiyo Suisan)



Canal Plaza, TARCHE Hotate de PON

Otaru Shukutsu scallops paired
will with Hokkaido products.
Reheat in a microwave.
(Manufacturer: Irikyu Miura
Suisan)

Sweet Souvenirs

Looking for souvenirs is one of the
pleasures of traveling. You want to
choose something special and unique
that you can only find in Otaru. And
when you think about the look on
their face when you give them their
gift, you can't help but smile...



Unga Plus Otataru History Series

"Manufacturing," beginning in
Otaru. They promote Otaru's
charm through their exclusive
line of accessories and food
products.



Sawa-no-Tsuyu Honpo Crystal Hard Candy

Amber colored hard candy made
only from sugar, without using
mizuame (millet jelly) or sweetener.
A delicate, sweet flavor adored for
over 100 years.



Un d'elice Pudding Daifuku

(gyuhi mochi with custard pudding filling)
Inside the soft gyuhi mochi is old-fashioned
jiggly custard pudding and fluffy whipped
cream. No wonder they became so popular
by word of mouth and online reviews.



Minato Mochi Bekomochi Rice Cakes

"Kusa bekomochi" made from fresh
yomogi (Japanese mugwort) is very
fragrant and has great texture. You'll
also want to eat the "black bekomochi"
(brown sugar bekomochi)

OTARU GUIDE MAP

Central Otaru Area

The map is convenient if you pull it out!

Legend

- Tourist Information Center
- Hotel
- Convenience Store
- Recommended Photo Spots
- Post Office
- Market
- Drugstore
- Parking
- Major Bus Stops
- Gas Station
- Toilet/Wheelchair Accessible Toilet
- Hospital
- School
- Police Box
- Taxi Stand
- Car Rental
- Bicycle Rental
- Charging Station
- Evacuation Area
- Free Wi-Fi
- Commemorative Stamp Locations
- Shrine
- Church
- Sights
- Transportation
- Activities
- Shopping
- Eating
- Sleeping

Local Buses to Tourist Attractions

Fare (per ride) Adult 240 yen Child 120 yen
Otaru City Bus One-Day Pass Adult 800 yen Child 400 yen

One-Day Pass offers unlimited rides for Otaru City Bus (within designated area).
Sold at: Otaru Station Chuo Bus Terminal, Canal Plaza.

Rechargeable contactless smart cards, such as **SAPICA**, **Kitaca** and **Suica** can also be used on any public transportation.

⑨ Tenguyama Line	(Main Bus Stops) Otaru Station Terminal / Honkyoku-mae / Tenguyama Ropeway
⑩ Otaru Aquarium Line	(Main Bus Stops) Otaru Station Terminal / Honkyoku-mae / Otaru Museum / Otaru Kihinkan (4/1~11/30) / Otaru Aquarium You can also take the "⑩ Otaru Aquarium" bus to go to the Otaru Aquarium

[Contact] Otaru Station Chuo Bus Terminal TEL. +81-134-25-3333
*Bus service is subject to change.

Ferry Information

Shin Nihonkai Ferry TEL. +81-134-22-6191

- Depart Otaru → Arrive Niigata
Mon~Sat 17:00~9:15 next day
- Depart Niigata → Arrive Otaru
Tue~Sun 12:00~4:30 next day

- Depart Otaru → Arrive Maizuru
Every day 23:30~21:15 next day
- Depart Maizuru → Arrive Otaru
Every day 23:50~20:45 next day

*Please confirm departure day & schedule prior to departure.
*Schedule is subject to change.

Temporary Baggage Storage (paid)

Use a baggage storage service instead of coin lockers, and enjoy sightseeing baggage-free!

- Kitarin MAP I-11
- COTARU MAP H-11

*Please contact each facility for business hours and fees.

Rental umbrellas are available for free!

Please return after use.

A rainy day in Otaru isn't too bad.
You can still have lots of fun!
From OTARU UTAI KAI

Free Umbrella Rental & Drop-off Points
Tourist Information Center (Canal Plaza / Asakusa Bridge / Otaru Station / Sakaimachidori)
JR Minami Otaru Station / any Taisho Glass store / Otaru Roman-kan / LeTAO Main Store / LeTAO PATHOS / etc.

Educational / Cultural & Tourist Facilities

Name	Address	TEL (+81-134)	Business Hours	Closed	Admission Fee (Adults)
Otaru City Museum of Art	1-9-5 Ironai	34-0035	9:30~17:00	Mondays / New Year holidays*	300 yen (excluding special exhibitions)
Otaru City Literary Museum	1-9-5 Ironai	32-2388	9:30~17:00	Mondays / New Year holidays*	300 yen (excluding special exhibitions)
Otaru Museum	1-3-6 Temiya	33-2523	9:30~17:00	Tuesdays / New Year holidays*	Summer 400 yen / Winter 300 yen
Otaru Museum (Annex)	2-1-20 Ironai	22-1258	9:30~17:00	New Year holidays	300 yen
The Bank of Japan Otaru Museum	1-11-16 Ironai	21-1111	10:00~17:00 from December to March Last entry at 16:30	Wednesdays (Public Holidays on Wednesdays are open) New Year holidays	Free
Former Otaru Branch of Nippon Yusen Co.	3-7-8 Ironai	32-4111	Closed for major preservation work / Scheduled to end in June 2024		

*Free admission for elementary and junior high school students.

*Public holidays are open and the following weekday is closed instead.

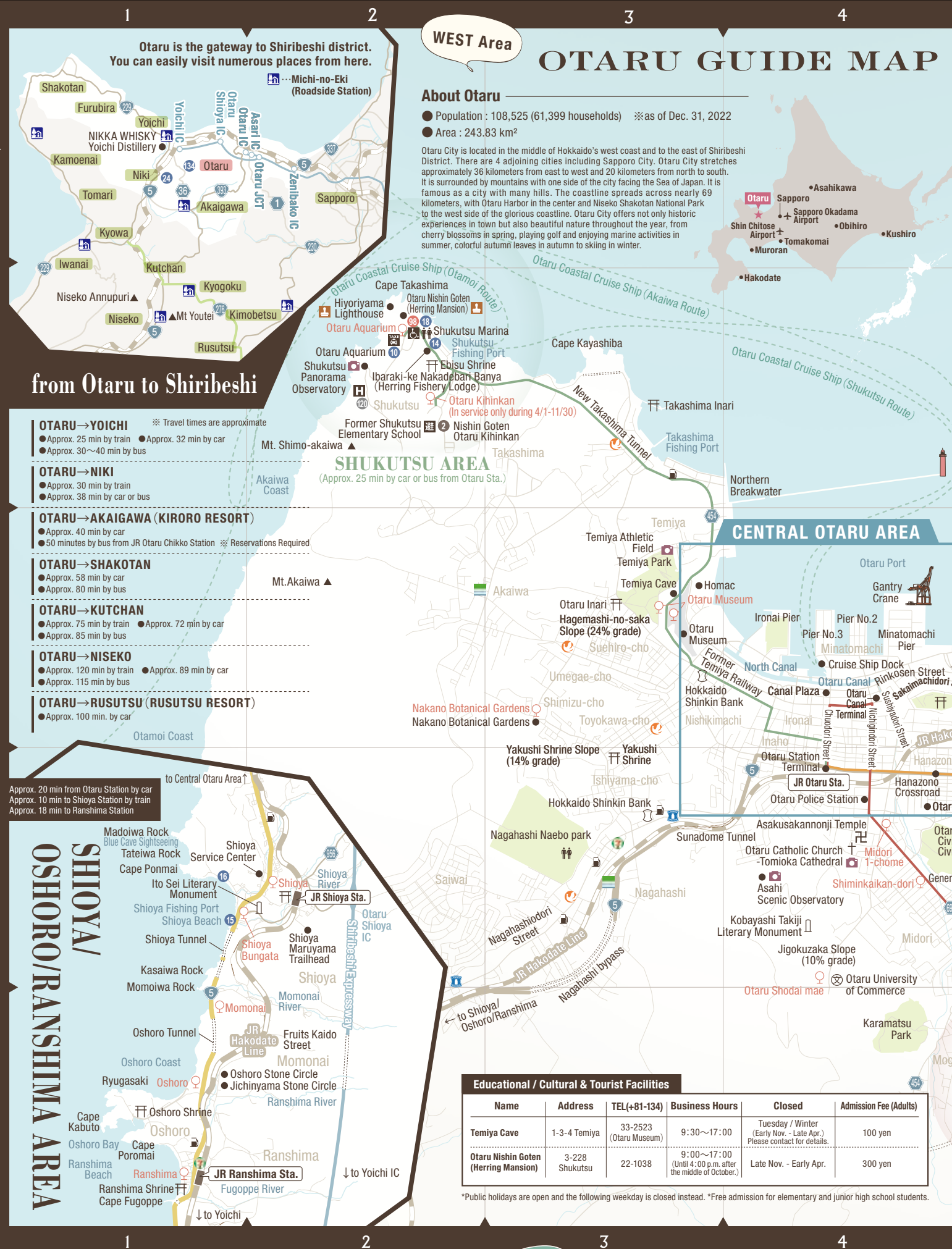
JR Otaru Station
TEL. +81-134-22-0771

Otaru Station Tourist Information Center
TEL. +81-134-29-1333

10 minutes' walk to Otaru Canal from here!
There are express buses to Sapporo, too.

*Operated jointly by Hokkaido Chuo Bus and JR Hokkaido Bus.
TEL. +81-134-25-3333

- | | | | | | | | | | |
|---|---|---|--|---|---|--|--|---|---|
| 1 The Bank of Japan Otaru Museum H-11 | 25 Miyakodori Shopping Street H-11 | 41 KAKUMARUDOU OTARU G-12 | 54 Otaru Fukuro G-13 | 67 Café & Restaurant KAIYOTEI KOSHJI H-12 | 81 Otaru Ankake Yakisoba Kakuryu G-11 | 96 Bar Duomo Rosso G-11 | 110 Otaru Masazushi Zen-an G-11 | 123 Guest House Otaru YaDo H-11 | 144 Taisho Glass Kuboya G-12 |
| 2 Rickshaw Ebisuya Otaru G-11 | 26 Otaru iPONTE G-10 | 42 Otaru Orgel Doh Main Hall G-13 | 55 Rishiriya Minoya (Seaweed Store) G-12 | 68 SONIA COFFEE G-11 | 82 Robata Kakigoya Nishikiya G-13 | 97 Nikka Bar Rita G-11 | 111 Fujizushi Otaru G-12 | 124 TOYOTA Rent a Car Otaru Station I-10 | 145 Taisho Glass Mahalo G-12 |
| 3 TARUSO Museum G-11 | 27 Yuzu Kobo The Glass Beads Studio G-11 | 43 Otaru Orgel Doh Main No.2 Antique Museum G-13 | 56 Kamaei Factory Store G-12 | 69 Otaru Beer Otaru Soko No.1 G-11 | 83 Kushiyaki Taisho Hanazono I-13 | 98 Kita-no-Ryoba Otaru Canal Restaurant G-12 | 112 TAKENO SUSHI G-12 | 125 Toyota Rent-A-Lease Otaru Station Inaho 2chome I-11 | 146 Taisho Glass Kanzashiya G-12 |
| 4 COTARU H-11 | 28 Anime Nixe H-11 | 44 Otaru Orgel Doh Sakaimachi G-12 | 57 Otaru Porokara G-12 | 70 Kahisakan Otaru Factory G-12 | 84 Hokkai "Aburayaki" Otaru Canal Warehouse G-11 | 99 OTARUKAISENDON GANGANTEI H-10 | 113 Shikamazushi H-12 | 126 OTARU ART BASE G-11 | 147 Taisho Glass Hokkoria G-12 |
| 5 Wine & Cafe Restaurant Otaru Bine H-11 | 29 TARCHÉ Marche in Otaru Station I-11 | 45 Otaru Orgel Doh Music box & Handcrafts Studio Yoku-kobo G-13 | 58 Gin no Kane No.1 building G-13 | 71 Humburg restaurant Bikuni Donkey Otaru Canal shop G-11 | 85 RAMEN NISHIYA Otaru Station I-11 | 100 Sawasaki Suisan Kaisen Shokudo G-11 | 114 KOO.inc H-14 | 127 Taisho Glass head Store G-12 | 148 Taisho Glass Creators Market Sou G-13 |
| 6 Otaru Canal Terminal H-11 | 30 Unga Plus G-11 | 46 Otaru Karakuri Dobutsuen (Toy Zoo) G-13 | 59 Maruamami H-13 | 72 Otaru Muse I-12 | 86 RAMEN NISHIYA Hanazono G-12 | 101 OTARU EZOYA G-12 | 115 OM05 Otaru by Hoshino Resorts H-11 | 128 Taisho Glass Creative Glass Studio G-11 | 149 Taisho Glass Mahalo "KURA" H-13 |
| 7 Otaru Bay Cruise G-11 | 31 Sasaki Houseijo H-10 | 47 Otaru Ruri-kobo Canal Shop G-12 | 60 Niikuraya Hanazono Main Store H-12 | 73 Restaurant Sizzle G-11 | 87 Ramen "Menya" I-11 | 102 Donburi Chaya Otaru Sakaimachi G-12 | 116 Canal side hotel OTARU FURUKAWA G-11 | 129 Taisho Glass Glass Beads Studio G-11 | 150 Taisho Glass Otaru Handmade Glass Studio H-13 |
| 8 Blue Cave Ryugu Cruise G-10 | 32 Souvenir Market Otaruya Unga Store G-12 | 48 LeTAO Main Shop G-13 | 61 Sawa-no-Tsuyu Honpo H-12 | 74 Osteria il Piatto Nuovo H-12 | 88 Otaru Hokushoan H-11 | 103 Sankakutei I-10 | 117 GRIDS PREMIUM HOTEL OTARU H-11 | 130 Taisho Glass SORA G-11 | |
| 9 Blue Cave Cruise by Tuusen G-10 | 33 Hiyori Facial Blotting Paper Otaru Shop G-11 | 49 LeTAO PATHOS G-12 | 62 Ryugetsu OTARUTO G-12 | 75 Otaru Stall Village H-11 | 89 YABUHAN Soba Restaurant (buckwheat noodles) I-11 | 104 Takinami Shokudo I-10 | 118 HOTEL TORIFITO OTARU CANAL H-11 | 131 Taisho Glass SORA G-11 | |
| 10 Otaru Blue Cave Waku Waku Cruising G-9 | 34 Music box Kaimeiro G-12 | 50 Nouvelle Vague LeTAO Chocolatier G-12 | 63 Amato H-11 | 76 Restaurant Mangiare Takinami G-10 | 90 Hajidokoro Takeda G-11 | 105 Sushi-Go-Round Waraku Otaru G-12 | 119 Hotel Nord Otaru G-11 | 132 Taisho Glass SORA G-11 | |
| 11 Blue Cave Cruising G-9 | 35 Kitaichi Glass, Sango-kan G-13 | 51 LeTAO Plus G-12 | 64 Yamanaka Dairy Farm Otaru Shop H-11 | 77 New Sanko Restaurant H-12 | 91 Genghishkhaan Otaru H-12 | 106 Sushi Nihonbashi H-12 | 120 Authentic Hotel Otaru H-11 | 133 Okuno Shouten G-12 | |
| 12 RENTAL KIMONO Otaru Komachi H-11 | 36 Kitaichi Venetian Art Museum G-12 | 52 DANI LeTAO G-13 | 65 Tanaka Sake Brewing Main Store G-10 | 78 SUSHI & GRILL IL ONAI G-11 | 92 Ungaya G-11 | 107 Otaru Masazushi Main Restaurant H-12 | 121 Cozy Inn OTARU G-9 | | |
| | 37 OTARU ROMANKAN G-12 | 53 Ekimo LeTAO I-11 | 66 Tanaka Sake Brewing Kikkogura G-14 | 79 Wagyu Kurosawa Main Store H-11 | 93 Otaru Denuki-koji G-11 | | | | |



Come have fun in Otaru's waters!

The Otaru Maritime Tourism Group

Bay Cruise [Aobato]

Shukutsu
■ 20 minutes one-way
Adult 1,000 yen, Elementary School Student 500 yen

Otomoi
■ Course A: 90 min (other courses available)
Adult 3,300 yen, Elementary School Student 1,650 yen

Sunset Cruise
■ June ~ August (Sat, Sun, Hol) Akaiwa Course 50 min
Adult 2,500 yen, Elementary School Student 1,250 yen
※Go to the website for details

Yakatabune [Kaiyo]

■ Cruise duration: approx. 40 min
Adult 1,500 yen, Elementary School Student 750 yen
※Operates on Saturdays, Sundays, and holidays

Bay Cruise, Yakatabune Operating period : April 22 - October 15, 2023

Marina Café

Produced by Kiroro Resort!
Sandwiches, salads, and sweets are also available.
We also recommend the marina's original lemonade and cocktails!

■ Business hours / 11:00~15:00
Jun. ~ Jul. ~ Sep. / Sat, Sun, Hol Aug. / Open every day (schedule)

500 Yen Short Cruise [approx. 20 min]

Special offer for Marina Café customers!
Go on a boat ride for 500 yen per person.

■ Cruise Schedule / 9 cruises a day between 11:30 and 15:30 (approximately every 30 minutes) / Closed Wednesdays (except in August)
※Please check the schedule in advance if you wish to go on the cruise.
※May be cancelled depending on weather conditions

Yacht Cruise [90 min hands-on cruise] Reservation-Only

Have fun in Otaru's ocean while feeling the sea breeze
◆ Adult 8,800 yen ※ Children under age 12: Free (up to 2 children per 1 guardian, children ages 5 and under cannot board)

■ min number of passengers for operation: 2
■ Operates from July 1 - end of September
■ Maximum number of passengers: 5
■ Departure Time / ① 10:30 am ② 1:30 pm

Yacht School is Now Open!
Rent a Yacht After Attending the School!

Otaru Bay Cruise

9 TEL +81-134-29-3131

<https://otaru-kankousen.jp>
MAP G-11 P ④ ⑤ ⑥ ⑦
4-2 Minatomachi, (Otaru Tour Boat Pier)

Otaru Aquarium! A Must-See!!

Aquarium with a variety of aquatic animals. Check out the dolphin, sea lion, seal and penguin performances.

Go to the aquarium by boat! Get the combo ticket for the best value!

Tour Boat & Otaru Aquarium Combo Ticket
Adult 2,400 yen ~
Middle School Student 1,350 yen ~
Elementary School Student 1,050 yen ~
Available at Otaru Tour Boat Pier

Open
Regular Season : Mar. 18 ~ Nov. 26, 2023
Winter Season : Dec. 16, 2023 ~ Feb. 25, 2024

Closed Nov. 27 ~ Dec. 15, 2023
Admission Adult 1,800 yen, Elementary & Middle School Student 700 yen, Infant (over age 3) 350 yen

おたる水族館 Otaru Aquarium
10 TEL +81-134-33-1400

<https://otaru-aq.jp>
MAP B-2 3-303 Shukutsu P ④ ⑤ ⑥ ⑦

OTARU CANAL CRUISE

12 TEL +81-134-31-1733

<https://www.mw-otaru.jp>
MAP C-5 P ④ ⑤ ⑥ ⑦
5-4 Minatomachi (By the Chuo Bridge on the Otaru Canal)

※Prices shown include tax. ※Subject to change in response to COVID-19.

13-minute Walk from Otaru Station!
Free Parking Available
Free Wi-Fi

Comfortable Seats Dedicated Tour Boat

Blue Cave Ryugu Cruise
Since 1988
13 Blue Cave Ryugu Cruise

Indoor Waiting Area
Many Men and Women WCs

Contact TEL+81-134-32-3911

Board At 4-5 Minatomachi (Ryugu Pier)
Departure Time 9:00~17:00 (Duration/about 80min.)
Operating period Apr~Oct. (Weather-related cancellations)
Price Adults 6,000 yen~, Children 4,000 yen~(taxincluded) MAP G-10

Take a glass bottom boat to a cave while viewing the ocean floor!

Otaru Glassboat Cruise

14 Otaru Glassboat Cruise

Board At 3-197 Shukutsu Business hours 8:00~18:00
Price Adult 5,500yen, Elementary school student 2,300yen, Free for preschoolers ※12 passengers per boat
※Please call for more than 12 people
※May be cancelled due to adverse weather

Contact TEL+81-90-7621-1092 MAP B-2



15 Salt Valley 408
TEL. +81-134-28-2181 MAP D-1
1-27-23 Shioya
The Blue Cave Expedition Cruise departs from Shioya! We recommend the cruise departing from Shioya if you are worried about seasickness! Please call us!
①8:00~17:00 (by phone) ②Weather-related cancellations (Operational: late Apr.~late Sep.)
③Adults 5,500 yen~, Children 3,300 yen~



16 Blue Cave Sightseeing Shioya
TEL. +81-90-8895-4400 MAP D-1
1-34-3 Shioya (Near the Shioya Fishing Port)
5 minutes by car from Shiribeshi Expressway Shioya Interchange! Takes 30 minutes round trip to the Blue Cave. Have fun on our safe and reliable tours! ①9:00~16:00 (Operating period: GW (end of April to beg of May) to mid-September) ②Weather-related cancellations ③Adult 3,500yen, Elementary school student 1,700yen, Children under elementary school are free



17 Blue Cave Cruise by tuusen
MAP G-10 3-3-1 Ironai (Next to Kitanihon Nenryo)
Have fun all year round with the Blue Cave and ATVs from spring to fall, and night cruises and snow banana boats in fall and winter.
①8:00~19:00 ②year-end and New Year's holidays ③Blue Cave: 4,950 yen with advance online payment discount ※U22, children's rates, etc. available



18 Blue Grotto
TEL. +81-80-1869-2621 MAP B-2
3-197 Shukutsu (Boarding Dock)
Blue Cave Cruise with Fishing Experience for Beginners! Free fishing gear rental. You can easily enjoy fishing.
①9:00~17:00 ②Weather-related cancellations (Operational Period: Apr 29~Sep 30) ③5,000 yen~

Experience Feeding Seagulls!

Otaru Blue Cave Waku Waku Cruising

19

Free Pick-up and Drop-off within Otaru City
Free Parking
Toilets Available
Free Towel and Jacket Rentals

Departs from the North Canal! Super Gratifying!

Instagram

Board At 3-6-17 Ironai (North Canal boat dock)
Price Adults 5,500 yen, Elementary school student 3,500 yen, Free for preschoolers
Operating period Apr~Oct. (Open every day during operational period)

Contact HP or +81-70-2218-5599 (Reception time 8:00~18:00) MAP G-9

Departs from the Otaru North Canal

Go to the Blue Cave in a High-Performance Power Cruiser

20 Blue Cave Cruising

Address 3-5 Ironai Business Hours 9:00~18:00
Price Adults 6,000 yen • Children 4,000 yen
Operating period Apr.~Oct. (Weather-related cancellations)

Contact +81-90-2230-1500 MAP G-9
https://otaru-cruise.com



21 SNOW CRUISE ONZE
TEL. +81-134-62-2228 MAP B-7
357 Haruka-cho
About 10 minutes by car from the Sasson Expressway Zenibako IC. Open until 23:00 every day. Free shuttle bus service is also available.
①Scheduled to be open from late November 2023 to late March 2024.
②None during winter season
③See the website for details



22 Asarigawaonsen ski resort
TEL. +81-134-54-0101 MAP C-8
1-394 Asarigawa Onsen
The location is captivating for its spectacular view of the Sea of Japan. The longest ski slope is 3,000 m, and can be enjoyed by both beginners and advanced skiers.
①9:00~17:00 ②Open daily from early December 2023 to early April 2024 ③Adult 1-day pass: 4,000 yen, elementary school student: 2,500 yen



23 RENTAL KIMONO Otaru Komachi
TEL. +81-80-8627-5761 MAP H-11
2-2-7 Inaho (Komachiya Bldg. 2F)
Come empty handed! Otaru, a city where kimonos and yukatas look great! ♥How about trying one on? Transform yourself into a new person♥
①10:00~16:00 (Negotiable)
②Tuesdays
③2hours 5,500yen~ Free Luggage Storage



24 Sightseeing Plantation Cherry Mountain
TEL. +81-135-32-2285 MAP A-1
9-138 Minami-machi Niki-cho Yoichi-gun
All you can eat cherries, plums, prunes, grapes, and apples when in season, all grown on extensive grounds. ①8:00~17:00 (last entry at 16:00) ②Open every day during operational period (close Nov~mid-Jun.)
③Cherry Picking with 100g cherries: Adult 1,500 yen, Elementary School Student 1,100 yen, Infant 600 yen (mid-Jun ~ mid-Aug) Full Course Seasonal Fruit Picking (plums, prunes, grapes, apples): Adult 1,500 yen, Elementary School Student 1,100 yen, Infant 600 yen (mid-Aug - late Oct)



26 Otaru iPONTE
TEL. +81-134-32-7880 MAP G-10
2-1-19 Ironai
Experience glassblowing, making small leather crafts and sandblasting. Create your very own special memory!!
①9:00~18:00 ②Irregular Holidays
③1,100 yen ~



27 Yuzu-kobo The Glass Beads Studio
TEL. +81-134-34-1314 MAP G-11
2-2-21 Ironai
Glass bead making studio located right behind the Canal Plaza. You can also make rings and bracelets.
①10:00~17:00 ②Irregular Holidays
③Workshop fee (1 person) 990 yen~

Welcome to the city of Otaru!!

Miyakodori Shopping Street

A shopping arcade that is a 3-min walk from the train station. Please stop by during your visit to Otaru. We look forward to seeing you.

Business hours will vary by store

25 Miyakodori Shopping Street (Office)
Address 2 Inaho Business Hours 9:30~16:30 Regular Holidays Sundays, Holidays
TEL +81-134-32-6372 Email miyakodori6372@gmail.com MAP H-11

28 Anime Nixe
TEL. +81-134-23-0010 MAP H-11
2-12-15 Inaho
The only store in Otaru specializing in anime character goods. Various TCGs are also available.
①Around 11:00~Around 19:00 ②Irregular Holidays



30 TARCHÉ Marche in Otaru Station
TEL. +81-134-31-1111 MAP I-11
2-22-15 Inaho (inside JR Otaru Station)
A selection of specialty products from Otaru and the surrounding 20 cities. We're sure you can find lots of delicious items!
①9:00~19:00 ②New Year's Day

29 The Glass Studio in Otaru
TEL. +81-134-33-9390 MAP E-5
2-16-16 Mogami
A glass studio at Mt. Tengu. Experience glass blowing and making original works.
①Apr to Oct: 10:00~18:00, Nov to Mar: 10:00~17:00 ②Tuesdays



32 UNGA (Unga plus)
TEL. +81-134-65-8150 MAP G-11
2-1-20 Ironai
A new type of select store offering "Otaru's uniqueness." Original products and crafts created with the local community. 2F is a gallery.
①11:00~18:00 ②Open year-round ※may close on short notice



33 Sasaki Houseijo
TEL. +81-134-22-5336 MAP H-10
2-10-15 Ironai
Please take a look at the canvas products made by a tent factory established in 1945, using techniques cultivated over many years.
①11:00~17:00 ②Monday-Friday, year-end and New Year's holidays (Irregular Holidays)



34 Souvenir Market Otaruya Unga Main Store
TEL. +81-134-24-3711 MAP G-12
6-5 Minatomachi
Look for the pumpkin sculpture near the Otaru Canal. We recommend the "Shiroi Koibito Soft Serve."
①10:00~17:00
※Varies depending on the situation
②Mondays, Wednesdays
※For the time being



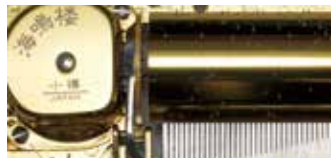
35 Hiyori Facial Blotting Paper Otaru Shop
TEL. +81-134-22-1414 MAP G-11
1-2-1 Ironai (1st floor of Otaru Masazushi Zen-an)
These limited edition oil blotting paper, only sold in Otaru, are great as souvenirs. We also recommend HIYORI select products, such as glassware, as a memento of your trip!
①10:00~17:00 (may vary by season)
②Irregular Holidays

Buy anything from seasonal clothing, household goods, medicine, cosmetics, food, gifts and souvenirs, Be sure to stop by!!

ALL IN ONE PLACE!

TAX Refund Counter on the 1st floor is open from 10:00~20:00.
The drug store is open from 9:00 to 19:00.
Lots of seasonal fruit and food!!
AEON OTARU is located in the west end of Wingbay Otaru Sixth Avenue.

31 AEON OTARU
Address 11-6 Chikko, Otaru City TEL +81-134-21-3100
1F Grocery Department 8:00~21:45
Other Departments 9:00~21:00
※Hours may vary by store
Regular Holidays Open year-round
MAP C-5 https://www.aeon-hokkaido.jp



36 Music box Kaimeiro

TEL. +81-134-23-6505



MAP G-12 1-20 Sakaimachi

Store that tied music boxes with Otaru. The mix & match music boxes where you can choose your song and box is popular. Decorate your choice of music box in the Music Box Workshop.
●9:30~19:00 ●Open year-round



37 Music box Kaimeiro, Hotel Grand Park Otaru

TEL. +81-134-23-6505



MAP C-5 11-3 Chikko (GRAND PARK OTARU 2F)

Each music box mechanism is made using patented technology. Very popular as any song can be made into a music box! Enjoy playing and arranging songs with our new "Infinity Music Box"!
●6:30~20:00 ●Open year-round



40 OTARU ROMAN-KAN

TEL. +81-134-31-6566



MAP G-12 1-25 Sakaimachi

A fun store filled with accessories, glass items and even Christmas products.
●9:30~17:30
●Open year-round



41 KAKUMARUDOU OTARU

TEL. +81-134-64-7674



MAP G-12 2-14 Sakaimachi

A wide variety of original glass, gemstone accessories, and gemstones. Glass cat bead accessories are also popular.
●9:30~17:30
●Open year-round



44 Otaru Orgel Doh Sakaimachi

TEL. +81-134-31-1110



MAP G-12 1-21 Sakaimachi

We recommend the Orgel Doh's limited edition music box using the "OTARU MUSIC" movement, assembled in the store's workshop. You can see the production process in person.
●9:00~18:00 (See the website for details)
●Open year-round



45 Otaru Orgel Doh Music box & Handicrafts Studio You-kobo

TEL. +81-134-21-3101



MAP G-13 1-1-5 Iritune

Create your own music box by adding your favorite charms. A unique music box like no other will make for an unforgettable memorabilia.
●9:00~18:00 (See the website for details)
●Open year-round
●Free admission, Workshop fee 2,000 yen ~



Double Fromage - Melt with Joy After Just One Bite!

※Except Nouvelle Vague and DANI LeTAO



48 LeTAO Main Shop

Soft and Fluffy Mont Blanc Cake

- Exclusive to the Main Store
- Only available in the morning



49 LeTAO PATHOS

Pasta

- Exclusive to Pathos
- Only available from 11-14

See the website for details

50 Nouvelle Vague LeTAO Chocolatier Otaru Main Shop

51 LeTAO Plus 52 DANI LeTAO 53 Ekimo LeTAO

Open everyday/Business Hours 9:00~18:00

※ Can be changeable depends on the seasons

For inquiries call +81-120-31-4521

MAP G-13

https://www.letao.jp/



38 Kitaichi Glass, Sango-kan

TEL. +81-134-33-1993



MAP G-13 7-26 Sakaimachi

Glass products created based on Otaru history and culture will bring enjoyment to your life.
●9:00~18:00 (Excluding certain stores)
●Open year-round



39 Kitaichi Venetian Art Museum

TEL. +81-134-33-1717



MAP G-12 5-27 Sakaimachi

Take a trip to Venice while in Otaru. View our extensive glass collection, take photos wearing dresses or visit their popular café directly connected to the museum.
●9:00~17:30
●Open year-round
●See the website for details



42 Otaru Orgel Doh Main Hall

TEL. +81-134-22-1108



MAP G-13 4-1 Sumiyoshi-cho

Built in 1915, the store has a nostalgic ambience. With one of the largest collections in the country of over 3,200 music boxes, they are popular as gifts and memorabilia from your trip to Otaru.
●9:00~18:00 (Fri, Sat & day before holiday during the summer ~19:00) (See the website for details)
●Open year-round



43 Otaru Orgel Doh Hall No.2 Antique Museum

TEL. +81-134-34-3915



MAP G-13 6-13 Sakaimachi

Visitors can enjoy antique music boxes of historical value and karakuri doll displays, as well as a mini-concert featuring a pipe organ.
●9:00~18:00 (See the website for details)
●Open year-round



46 Otaru Karakuri Dobutsuen (Toy Zoo)

TEL. +81-134-24-3977



MAP G-13 4-1 Sumiyoshi-cho

A store full of cute stuffed animals and accessories! You'll definitely find something you like.
●9:00~18:00 (See the website for details)
●Irregular Holidays



47 Otaru Ruri-kobo Canal Shop

TEL. +81-134-31-5101



MAP G-12 1-22 Sakaimachi

Accessory specialty store. The stained glass and handmade accessories by Hokkaido artists are popular.
●9:00~18:00 (Subject to change, please contact us for details.)
●Open year-round



54 Otaru Fukurou

TEL. +81-134-21-6001



MAP G-13 6-9 Sakaimachi

Lots of "kawaii" (cuteness) from souvenirs, stuffed toys to accessories. A large selection of owl items as owls are believed to bring good luck.
●9:30~18:00 ※Close at 17:30 for the time being
●Open year-round



55 Rishiriya Minoya (Seaweed store)

TEL. +81-134-25-4060



MAP G-12 1-20 Sakaimachi

Look in the mirror after eating this for seven days! is the slogan of this help specialty store. Please enjoy Hokkaido's famous kelp as souvenirs!
●9:00~18:00
●Open year-round



56 Kamaei Factory Store

TEL. +81-134-25-5802



MAP G-12 3-7 Sakaimachi

Skilled professionals make these home-made fish cakes with tender loving care. There is also a section where you can view the factory.
●May~Oct. 9:00~19:00
Nov.~Apr. 9:00~18:00
●Jan 1 only
●Factory Tour: Free



57 Otaru Porokara

MAP G-12 2-12 Sakaimachi

We sell Porokara Crunchy Cheese Sticks® and our special Fruit Daifuku at the light blue building next to Kenkempa Square on Otaru's Sakaimachidori Shopping Street!
●10:00~ ●to be determined



58 Gin no Kane No.1 building

TEL. +81-134-21-2001



MAP G-13 1-1-2 Iritune

You can take home the coffee cup as a keepsake. We recommend the limited quantity cake set.
●10:00~17:30 (Subject to change)
●Open year-round



59 Maruamami

TEL. +81-134-61-1138



MAP H-13 1-2-22 Iritune

The only store in Otaru that produces baumkuchen in its own factory. The baumkuchen ends available at the adjoining factory is popular.
●10:00~18:00
●Thursdays



60 Niikuraya Hanazono Main Store

TEL. +81-134-27-2122



MAP H-12 1-3-1 Hanazono

Take a break and enjoy Otaru's specialty "Hanazono Dango" and "Dorayaki Soft Serve." We recommend the "Ishikura Kurumi Mochi" (walnut rice cake) as souvenirs.
●9:30~18:00
●Open year-round



61 Sawa-no-Tsuyu Honpo

TEL. +81-134-22-1428



MAP H-12 1-4-25 Hanazono

Established in 1911. The taste of the Meiji era is passed down to the present. Crystal clear, smooth, and subtly sweet with a lemon aroma, "Sawano Tsuyu" is the perfect souvenir!
●11:00~16:00
●Wednesdays, Irregular Holidays



64 Yamanaka Dairy Farm Otaru Shop

TEL. +81-134-27-5123



MAP H-11 1-6-18 Ironai

Our soft serve ice cream using fresh milk features a creamy and refreshing aftertaste.
●11:00~17:00
●Mondays



63 Amato

TEL. +81-134-22-3942



MAP H-11 2-16-18 Inaho (Miyakodori Shopping Street)

"Amato desserts," selective about ingredients and being handmade, have been loved by many since it was established in 1929.
●10:00~19:00
●Thursdays & Irregular Holidays (5 Tuesdays a year ※ Please check our website)



Homemade Chocolate Gateau



Berry Liqueur Berry Parfait



Otaru Blue Soda Float



Cream Soda Romance



Kaiyotei Pork Bowl with Yoichi Kitajima Pork



Koshiji's Special Soup Curry Yakisoba <only available here>

Please enjoy our nostalgic coffee shop menu and dishes made with local ingredients in a space that recreates the study of great writers.

67 Café & Restaurant KAIYOTEI KOSHJI

[Address] 1-1-6 Hanazono (Hanazonoginza Shopping Street) [TEL] +08-134-61-7682

[HP] https://www.kaiyotei-koshiji.com

[Business Hours] 11:00~21:00 (LO 20:00)

[Regular Holidays] Year-end and New Year's holidays

Private Rooms Available

MAP H-12



Hokkaido Souvenir



Sanpouroku



Otaruto (exclusive to the Otaruto store)



Anbatasan

A New Entertainment Spot for Sweets!

Opened in April 2022 on Sakaimachidori Shopping Street!!

Delicious! Fun!

For Photo Ops

Glass Art (exclusive to the Otaruto store)



65 Tanaka Sake Brewing Main Store

TEL. +81-134-23-0390



MAP G-10 3-2-5 Ironai

Main store of a long-established traditional sake brewery where you can enjoy local "Otaru Sake." Take your time tasting and shopping for all the various sake. This is the only sake brewery in the city.
●9:05~17:55 ●Open year-round



66 Tanaka Sake Brewing Kikkogura

TEL. +81-134-21-2390



MAP G-14 2-2 Nobuka-cho

Brewery of Otaru's locally brewed sake "Takaragawa." Anyone can tour the factory at any time and enjoy tastings of their local sake.
●9:05~17:55
●Open year-round



68 Otaru-Winery

TEL. +81-134-34-2181



MAP D-7 1-130 Asarigawa Onsen

One of the largest wineries in Hokkaido, selling over 100 types of wine, free tastings, and paid factory tours.
●9:00~17:00 ●New Year's Holiday
●Free Admission, Winery Tour (Fee, reservation required)



We are always waiting for you with smiles and wines.



69 SONIA COFFEE

TEL. +81-134-23-2600



MAP G-11 1-4-20 Ironai (Hotel Sonia 1st Floor)

Specialty coffee made from roasted Tokumitsu coffee beans using a French press. Seats with outlets to charge your mobile phones are available.
●10:00~18:00
●Open year-round



70 Otaru Beer Otaru Soko No.1

TEL. +81-134-21-2323



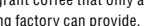
MAP G-11 5-4 Minato-machi

Otaru beer brewery and beer pub. Tours available. Our food menu promoting local ingredients match perfectly with our beer.
●11:00~22:00 (LO21:00) ●Open year-round



71 Kahisakan Otaru Factory

TEL. +81-134-24-0000



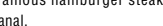
MAP G-12 5-30 Sakaimachi

You can enjoy fresh and fragrant coffee that only a café with an adjoining roasting factory can provide.
●10:00~17:00
●Open year-round



72 Humberg restaurant Bikkuri Donkey Otaru Canal shop

TEL. +81-134-21-2227



MAP G-11 5-4 Minato-machi

Enjoy Bikkuri Donkey's famous hamburger steak while viewing the Otaru Canal.
●18:00~24:00 (LO23:30)
●Open year-round

Open year-round!
From Hokkaido souvenirs, enjoy
sushi, kaisendon, steak
(and more!)

540 seats

Kaisendon
1,738yen (tax included)~

Nigiri sushi
3 pieces 418yen
(tax included)~

きたのりようば
北の漁場

Yan-shu Kita-no-Ryoba
Otaru Canal Restaurant
-Steak & Seafood-

5-35 Sakaimachi
(across from the Sightseeing Bus Parking Lot)
TEL. +81-134-31-3041 (Banquet package is also available)
11:00~17:00 (open year-round)
<http://www.uodabussan.co.jp>

MAP G-12

小樽海鮮丼 がんが亭
GanGanTei

Kaisen-don (seafood rice bowl) using fresh Hokkaido seafood and rice is now available inside the Otaru Chuo Market, which is also a part of the Japan Heritage site "Tantetsuko (coal mines, steel mills, shipping ports)"!

100 OTARUKAISENDON GANGANTEI
【Address】3-11-2 Inaho (Otaru Chuo Market Building 2)
【For inquiries】+81-80-8012-4876
【Business Hours】11:00~15:00
【Regular Holidays】Mondays & Irregular Holidays

MAP H-10

Enjoy Otaru's fresh and in-season seafood at a reasonable price inside a casual and relaxed environment.

和楽
WARAKU

107 Sushi-Go-Round Waraku Otaru
3-1 Sakaimachi TEL. +81-134-24-0011
Business Hours: 11:00~22:00 (LO 21:30)
Closed: New Year's Day

<https://www.waraku1.jp/>

MAP G-12

Otaru Sushiyadori

日本橋
Otaru's Seasonal Sushi

108 Sushi Nihonbashi
<http://www.otarusushi.com/>
1-1-4 Inaho TEL. +81-134-33-3773 MAIL. info@otarusushi.com
Business Hours: 11:00~15:00 (LO 14:30), 17:00~21:00 (LO 20:30)
Closed: Thursdays, 1st and 3rd Wednesday, Dec. 31~Jan. 3 (may close on short notice) Seating Capacity: 120

MAP H-12



109 Sawasaki Suisan Kaisen Shokudo
TEL. +81-134-23-2112
MAP G-11 1-1 Ironai (inside Otaru Denuki-Koji)
Directly managed by a crab fishery, we use only the finest boiled king crab. Our homemade soy sauce marinated ikura (salmon roe) is delicious!
① 11:00~20:00
② Open year-round



102 OTARU EZOYA
TEL. +81-134-23-9727
MAP G-12 2-22 Sakaimachi
We are open every day in good spirits with the motto of serving the freshest flavors, mainly from Hokkaido, with the best hospitality. We look forward to serving you in hopes that your dining experience with us will make you genuinely say "I'm so glad I came to Otaru!"
① 11:00~18:30 ② Irregular Holidays



103 Donburi Chaya Otaru Sakaimachidori
TEL. +81-134-64-5593
MAP G-12 3-24 Sakaimachi
Muslim-friendly menu is available. Restaurant specializing in kaisen-don (seafood bowl) where you can enjoy in-season Hokkaido seafood!
① (Weekdays) 11:00~16:00 (LO 15:30),
(Saturday) 11:00~20:00 (LO 19:30),
(Sunday) 11:00~18:00 (LO 17:30)
② New Year's Day



104 Sankakutei (Kaisen Shokudo)
TEL. +81-80-5724-9212
MAP I-10 3-10-16 Inaho (inside Sankaku Market)
The Colorful-don was featured on the TV program "Sekaku Gurume," we welcome students for the Student Special-don, choose your 3 favorite toppings for the 3 Shoku-don
① 8:00~16:00
② Irregular Holidays



109 Otaru Masazushi Main Restaurant
TEL. +81-134-23-0011
MAP H-12 1-1-1 Hanazono
Highlighting the best of seasonal seafood through traditional culinary skills, savor the freshest and finest Hokkaido has to offer.
① 9:00~21:00 (LO 20:30)
② Wednesdays, Jan 1 & Irregular Holidays



110 Otaru Masazushi Zen-an
TEL. +81-134-22-0011
MAP G-11 1-2-1 Ironai
Enjoy quality ingredients in a comforting and warm setting created by ambient lighting.
① 9:00~21:00 (LO 20:30)
② Thursdays & Irregular Holidays



111 Fujizushi Otaru
TEL. +81-134-33-0232
MAP G-12 5-36 Sakaimachi
Fuji Sushi Otaru, whose main store is in Shakotan, offers seafood from Shakotan as well as the Otaru coast.
① 11:00~20:00 ② Thursdays



112 TAKENO SUSHI
TEL. +81-134-25-1505
MAP G-12 2-22 Sakaimachi
Enjoy carefully selected Hokkaido ingredients at a reasonable price.
① 11:00~21:00 (LO 20:00)
② Thursdays

Established 78 years ago
Run by Takinami Shoten!
Kita no Donburiya
Takinami Shokudo

A variety of seaside cuisine and set meals using fresh Otaru seafood! Their fresh ingredients, recipes, and service passed down since they first opened satisfy the hearts of visitors!

Buy souvenirs at Takinami Store, right across from the diner!

Choose 3 or 4 toppings and the size of your donburi from about 10 different toppings!

Choice of Donburi Wagamama-don

TEL. +81-134-23-1426
3-10-16 Inaho (Inside Sankaku Fish Market)
※No Reservations
Business Hours 8:00~17:00
Closed New Year's Day
<https://otaru-takinami.com/>

MAP I-10

106 Run by Takeda Fish Shop
Ajidokoro Takeda
3-10-16 Inaho (inside Sankaku Fish Market)
TEL. +81-134-22-9652
Business Hours / 7:00-16:00
Closed / New Year's Day
<http://www.otaru-takeda.com/>
P MAP I-10

A place where you can eat all the freshest seafood from Otaru, Hokkaido!!

Fresh Seafood Sold at "Takeda Seafood Shop," right across from the diner!

1kg Marinated Salmon-don!!

A donburi created by a rice shop!!
Izuchi-don

Seating Capacity of 100!!



113 Shikamazushi
TEL. +81-134-25-4040
MAP H-12 1-2-5 Hanazono
Using seasonal ingredients, we prepare sushi wholeheartedly. The restaurant has a spacious interior, an elevator and is accessible (barrier-free).
① 11:00~21:00 (Closed: 15:00~17:00)
② Tuesdays, New Year's Day, may close on short notice



114 K00.inc
TEL. +81-134-65-8181
MAP H-14 2-5-14 Wakamatsu
#Music Production #PR Video Production #Web Distribution Services #Graphic Design Planning and Production #Web Design #Drone Photography #360°Video #VR Content Planning and Production
① 10:00-19:00
② Saturdays, Sundays & Holidays



115 Asarigawaonsen Hotel
TEL. +81-134-54-0026
MAP C-8 2-670 Asarigawa Onsen
Experience the gentle touch of water on your skin at our hot spring and enjoy a variety of dishes with local fresh and seasonal ingredients.
① Check-in 15:00 / Check-out 10:00 ② Open year-round ③ One-day bathing fee: Adults 650 yen, elementary school students 300 yen / Accommodation fee: 6,150 yen~



116 Otaru Asari Classe Hotel
TEL. +81-134-52-3800
MAP C-8 2-676 Asarigawa Onsen
Onsen resort hotel tucked away in the Asarigawa Onsen area of Otaru. A ski resort is located right in front of the hotel in the winter.
① Check-in 15:00 / Check-out 10:00
② Open year-round
③ 8,800 yen ~ (When 2 guests stay in a room, 1 night with breakfast)

Relax BBQ Fireplaces

Winkel Village
ウインクル ビレッジ

Cottage, Condominium & Camp

117 Winkel Village
【Address】2-686 Asarigawa Onsen, Otaru
【TEL】+81-134-52-1185 (9:00~18:00) <http://www.winkel.co.jp/>

Glamping & Premium BBQ Overlooking Otaru Port



WING BAY CAMP GARDEN UMI TO SORA

Address/ 11 Chikko, Otaru City
(Wing Bay Otaru 2nd Avenue 4th Floor)
Contact/ +81-134-65-7815 (9:00~17:00)

MAP C-5



119 Grand Park Otaru

TEL. +81-134-21-3111

MAP C-5 11-3 Chikko

An international hotel with a great view, directly connected to Otaru Chikko Station and Wing Bay Otaru.

① Open 24 hours ② Open year-round
③ 7,250 yen ~ (electronic payments not accepted for banquet bills)



121 OMO5 Otaru by Hoshino Resorts

TEL. +81-50-3134-8095
(OMO Phone Reservation Center)

MAP H-11 1-6-31 Ironai

A city hotel with a concept of "scenic canal strolls in a retro port town," where guests can enjoy a deep experience of Otaru.

① Check-in 15:00/Check-out 11:00
② Open year-round ③ From 16,000 yen per room, per night (tax included・meal not included)



120 Hotel Neuschloss Otaru

TEL. +81-134-22-9111

MAP B-2 3-282 Shukutsu

An ocean view resort hotel in a national park surrounded by the sea on three sides with an open-air bath in all rooms. Savor the original French full-course meals where you can feel the four seasons. Enjoy the luxurious and unexpected moving experience.

① Check-in 15:00/Check-out 11:00
② Open year-round ③ 13,200 yen ~



122 Canal Side Hotel OTARU FURUKAWA

TEL. +81-134-29-2345

MAP G-11 1-2-15 Ironai

A hotel with a natural hot spring located right in front of the Otaru Canal. This spring, 8 new guest rooms with hot spring baths and a dog-friendly room will be available!

② Open year-round ③ 10,750 yen ~ 42,100 yen

Stay in a historic and romantic port town...



Approx. 5-min walk from JR Otaru Station

Enjoy both sightseeing and local food within walking distance of Authent Hotel Otaru.

127 Authent Hotel Otaru

2-15-1 Inaho TEL: +81-134-27-8100

MAP H-11

https://www.authent.co.jp



130 TOYOTA Rent a Car Otaru Station

TEL. +81-134-27-0100

MAP I-10 4-7-7 Inaho

3-minute walk from Otaru Station. Navigation system, ETC, and backup monitor included as standard equipment. We also have a store in the Niseko area. (0136-21-2005)

① Apr. 1 ~ Oct. 31 8:00~20:00, Nov. 1 ~ Mar. 31 8:00~19:00, Dec. 31 8:00~19:00 ② Jan. 1 ~ 3



131 Toyota Rent-A-Lease Otaru Station Inaho 2 Chome

TEL. +81-134-29-0100

MAP I-11 2-22-1 Inaho (Otaru Economic Center B1F)

2-minute walk from Otaru Station. Hotel pick up within the city available (scheduled times). Car navigation system, ETC (Electric Toll Collection system), hybrid car available. Separate ETC card rental service is also available.

① Apr. 1 ~ Oct. 31 8:00~20:00, Nov. 1 ~ Dec. 30 8:00~18:00, Dec. 31 8:00~16:00, Jan. 4 ~ Mar. 31 8:00~18:00 ② Jan. 1 ~ 3



132 OTARU ART BASE

- ◆ Stained Glass Museum (Former Takahashi Warehouse, Former Arata Trading Company)
- ◆ Former Mitsui Bank Otaru Branch
- ◆ Nitori Museum of Art (Former Hokkaido Takushoku Bank Otaru Branch)
- ◆ House of Western Art (Former Naniwa Warehouse)

1 Chome 3-1 Ironai [Nitori Museum of Art]
TEL: +81-134-31-1033

Business Hours

- Nov. - Apr. / 10:00~16:00 (Closed: Wednesdays)
※ Thursday if Wednesday is a national holiday
- May - Oct. / 9:30~17:00 (Closed: 4th Wednesday)
[Last admission: 30 minutes before closing]
※ may close on short notice



House of Western Art
(Enjoy Decorative art in a large space of about 2,400sqm)



Nitori Museum of Art
(Modern and Contemporary Paintings and Sculptures Exhibits)



Former Mitsui Bank Otaru Branch
(Designated as a National Important Cultural Property in February 2022)



Stained Glass Museum
(98 Stained Glass Pieces of English Churches)



123 GRIDS PREMIUM HOTEL OTARU

TEL. +81-134-31-5801

MAP H-11 1-3-13 Ironai

Opened in September 2022. 9-minute walk from Otaru Station. Includes a large public bath with an open-air bath and is adjacent to a convenience store.

① Open 24 hours ② Open year-round
③ 6,500 yen ~ (When 2 guests stay in a room)



124 Hotel Torifito Otaru Canal

TEL. +81-134-20-2200

MAP H-11 1-5-7 Ironai

Opened in April, 2018. Walking distance to Otaru Canal and Sakaimachidori Street. Design inspired by Otaru's uniqueness is charming.

※ Image is for illustrative purposes only

② Open year-round ③ 6,000 yen ~ (Price per person/double occupancy)



125 Hotel Sonia Otaru

TEL. +81-134-23-2600

MAP G-11 1-4-21 Ironai

A hotel located in front of the Otaru Canal with a natural hot spring on the top floor. A sushi bar restaurant and café are located on the first floor.

② Open year-round ③ 6,000 yen ~



126 Hotel Nord Otaru

TEL. +81-134-24-0500

MAP G-11 1-4-16 Ironai

Located in front of the Otaru Canal, convenient for sightseeing. Facilities include an observation bar lounge, buffet restaurant, banquet hall and meeting rooms.

② Open year-round ③ 6,000 yen ~



128 Cozy Inn OTARU

TEL. +81-134-65-7171

MAP G-9 18-14 Nishikimachi

Container Hotel OPEN in July 2020! Spacious and clean rooms are very popular among families. Free parking and free child care are also available, making it perfect for those looking for a good deal.

① 9:00~22:00 (Reception time)
② Open year-round ③ 6,000 yen



129 Guest House Otaru YaDo

TEL. +81-134-64-7066

MAP H-11 1-3-10 Inaho

Guests naturally gather in the lounge, where they can relax in a setting recreating the outdoors, and enjoy interacting with other guests and staff.

① 12:00~21:00 ② Open year-round
③ 2,200 yen ~ for person for a night (You can have a meal at an adjoining café for an extra fee)



133 GINRINSOU 1-1 Sakura TEL: +81-134-54-7010

- Main building-Japanese-style room 16,500 yen ~ / per person
- New building-Japanese-style room 27,500 yen ~ / per person
- ※ Bathing Tax 150 yen charged separately

【 Grill GINRINSOU 】 ■ Lunch Course / 4,400 yen ~
Hot Spring Bath Plan Available on the Same Day
(reservation required, bathing fee 500 yen charged separately)



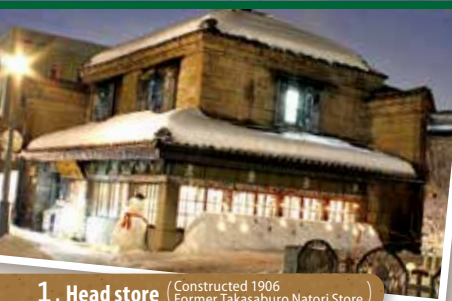
134 Nitori Sightseeing Orchard

1102-5 Noboricho Yoichi TEL: +81-135-23-6251

- Operational period early May ~ early Nov.
(Open every day during operational period)
- Business Hours / 9:00 ~ 17:00
- Admission fee / Adult 1,500 yen ~



※ Prices shown include tax. ※ Subject to change in response to COVID-19.



1. Head store (Constructed 1906 Former Takasaburo Natori Store)

OTARU TAISHO GLASS

Sending You Dreams Entrusted in Glass



7. Okuno Shouten



7. Utsuwaya



5. SORA



10. Mahalo



2. Creative Glass Studio



12. Hokkoriya



4. Lamp Bead Studio



8. Shukigura



9. Kuboya
(Constructed 1907 Former Kubo Store)



3. Glass Beads Studio

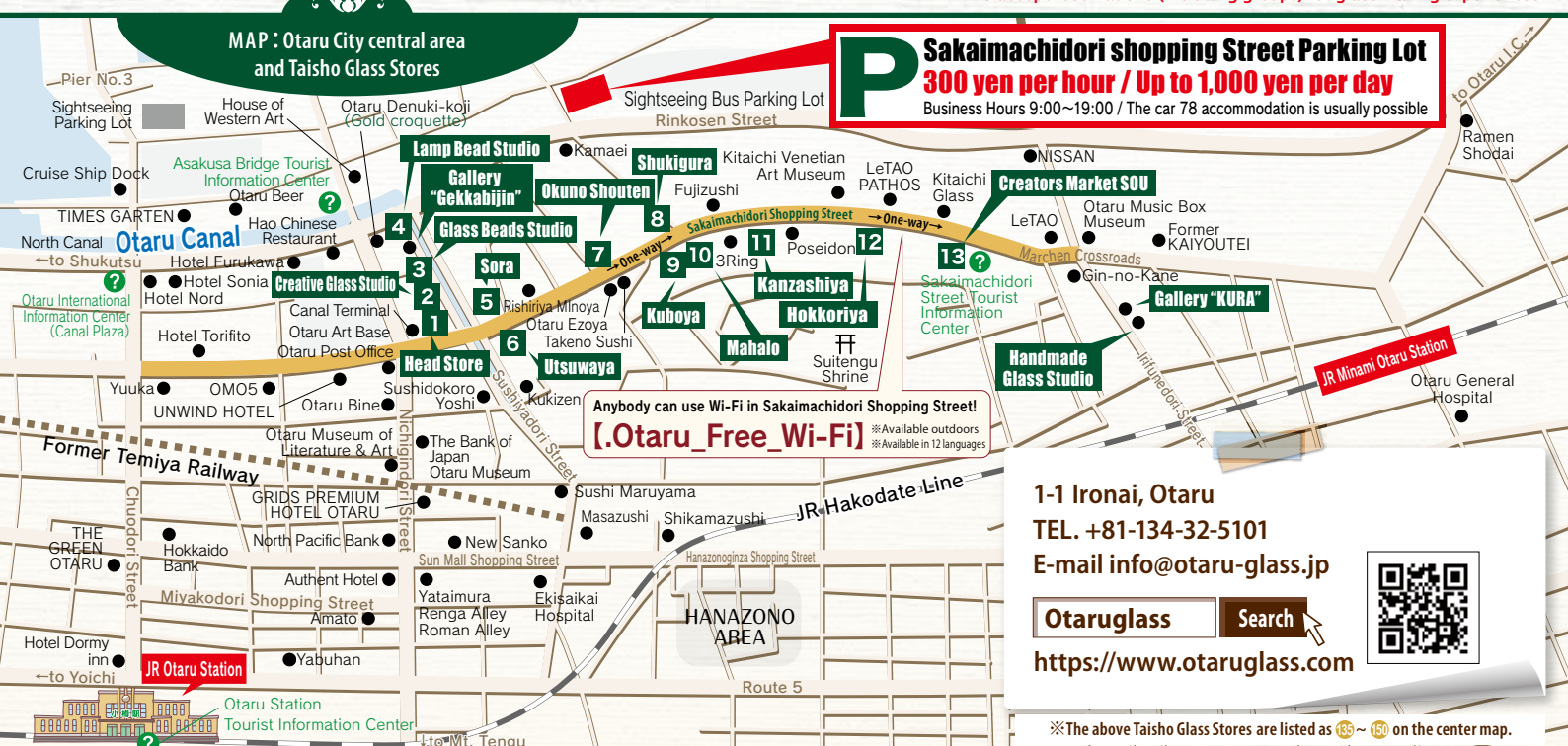


13. Creators Market SOU



11. Kanzashiya

※We accept reservations (including groups) for glass making experiences.



For inquiries regarding tourism

Please note that the contents are subject to change without prior notice.

- Otaru International Information Center (Canal Plaza) 2-1-20 Ironai (inside Canal Plaza) tel.+81-134-33-1661
- Otaru Station Tourist Information Center 2-22-15 Inaho (inside Otaru Station) tel.+81-134-29-1333
- Asakusa Bridge Tourist Information Center 5 Minatomachi (Otaru Canal)
- Sakaimachidori Street Tourist Information Center 6-11 Sakaimachi tel.+81-134-27-1133

- Otaru Tourism Association 4-3 Minatomachi tel.+81-134-33-2510
- Otaru City Industry and Port Department Tourism Promotion Office 4-3 Minatomachi tel.+81-134-32-4111 (ex.7450)

[Photo]

- Masamichi Shisa
- Toru Kurita
(Kurita Photo Studio Co., Ltd.)
- Rika Magara